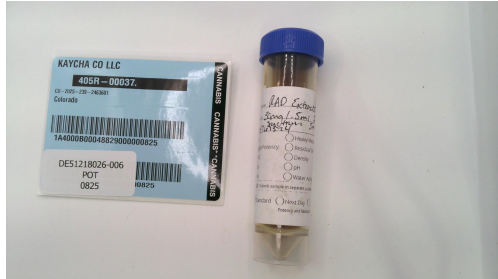




Certificate of Analysis

PASSED



Batch #: 647613-14
Harvest Date: 12/18/25
Production Method: Other
Total Amount: 1 units
Retail Product Size: .5 ml
Retail Serving Size: 1 ml
Density: 0.96 g/mL
Servings: 1
Metric Package #: 1A4000B00048829000000825
Metric Source Package #: NA

Lab ID: DE51218026-006
Ordered: 12/18/25
Sampled Date: 12/18/25
Sample Size: 5 ml
Completed: 12/22/25

Rad Extracts

860 Commercial Lane,
Palmer Lake, CO, 80133, US
License #: 405R-00037

SAFETY RESULTS

MISC.

								
Pesticide	Heavy Metals	Microbial	Mycotoxins	Solvents	Filt/Foreign Material	Water Activity	Moisture Content	Terpenes
NOT TESTED	NOT TESTED	NOT TESTED	NOT TESTED	NOT TESTED	NOT TESTED	NOT TESTED	NOT TESTED	NOT TESTED



Cannabinoid

PASSED



Total THC
0.228%



Total CBD
6.759%



Total Cannabinoids
7.538%

	CBDV	CBDVA	CBG	CBD	CBDA	THCV	CBGA	CBN	EXO-THC	D9-THC	D8-THC	THCVA	D10-THC	CBC	THCA
%	0.119	ND	0.167	6.714	0.051	ND	ND	ND	ND	0.228	ND	ND	ND	0.259	ND
mg/unit	0.571	ND	0.802	32.227	0.245	ND	ND	ND	ND	1.094	ND	ND	ND	1.243	ND
LOD	0.002	0.001	0.002	0.001	0.001	0.002	0.001	0.001	0.004	0.001	0.002	0.001	0.002	0.002	0.002
LOQ	0.005	0.003	0.006	0.004	0.004	0.006	0.005	0.005	0.012	0.003	0.008	0.004	0.006	0.008	0.006
Qualifier	%	%	%	%	%	%	%	%	%	%	%	%	%	%	%

Analyzed by:
3460, 3200, 8, 4046

Weight:
0.1639g

Extraction date:
12/19/25 11:18:12

Extracted by:
3460

Analysis Method: SOP.T.40.039.CO

Analytical Batch: DE011723POT

Instrument Used: No Name (Shimadzu)

Batch Date: 12/19/25 09:07:16

Analyzed Date: 12/22/25 07:50:42

Dilution: 40

Reagent: 120425.R14; 120425.R16; 121625.R13; 121125.R05; 121225.R04; 121725.R10; 121825.R06; 121825.R07; 120425.R12; 082925.01

Consumables: 230822-052-1A; 947.100; 24172079; 04311051; 0000399406; 042725CH01; 1009372578; 61572-107C6-107H

Pipette: 20C40454_Repeater; 19L82077_P100; 21K57929_P200

Full spectrum cannabinoid analysis utilizing High Performance Liquid Chromatography with DAD detection (HPLC-UV). Method SOP.T.90.010.CO for reporting. Lower limit of linearity for all cannabinoids is 1 mg/L.

This report shall not be reproduced, unless in its entirety, without written approval from Kaycha Labs. This report is a Kaycha Labs certification. The results relate only to the material received or product analyzed. Test results are confidential unless explicitly waived otherwise. Void after 1 year from test end date. Cannabinoid or contaminant content of batch material may vary depending on sampling error. ND=Not Detected, NT=Not Tested, ppm=Parts Per Million, ppb=Parts Per Billion. Limit of Detection (LoD) and Limit Of Quantitation (LoQ) are terms used to describe the smallest concentration that can be reliably measured by an analytical procedure. RPD=Reproducibility of two measurements. Action Levels are State determined thresholds. The Measurement Uncertainty (UM) error is available from the lab upon request.

William Stephens
Lab Director



State License #
405R-00037 405-00022
ISO 17025
Accreditation #
4331.01

Signature
12/22/25
Laboratory License #:
405R-00037



3940 Holly St.
Denver, CO, 80207, US
(303) 427-2379

Kaycha Labs
.....
30mg/.5ml Full Spectrum Softgel
Matrix: Infused
Classification: Hybrid
Type: Capsule/Softgel



Certificate of Analysis

Pages 2 of 2

Rad Extracts

860 Commercial Lane,
Palmer Lake, CO, 80133, US
License #: 405R-00037

Sample: DE51218026-006

Batch #: 647613-14
Seed to sale: 1A4000B00048829000000825

Ordered: 12/18/25
Sampled: 12/18/25
Completed: 12/22/25

PASSED

COMMENTS

* Cannabinoid DE51218026-006POT

1 - Measurement Uncertainty for delta-9 THC (wt%, Infused) 95% interval : 0.07, Measurement Uncertainty for THCA (wt%, Infused) 95% interval : 0.05

This report shall not be reproduced, unless in its entirety, without written approval from Kaycha Labs. This report is a Kaycha Labs certification. The results relate only to the material received or product analyzed. Test results are confidential unless explicitly waived otherwise. Void after 1 year from test end date. Cannabinoid or contaminant content of batch material may vary depending on sampling error. ND=Not Detected, NT=Not Tested, ppm=Parts Per Million, ppb=Parts Per Billion. Limit of Detection (LoD) and Limit Of Quantitation (LoQ) are terms used to describe the smallest concentration that can be reliably measured by an analytical procedure. RPD=Reproducibility of two measurements. Action Levels are State determined thresholds. The Measurement Uncertainty (UM) error is available from the lab upon request.

William Stephens

Lab Director

State License #
405R-00037 405-00022
ISO 17025
Accreditation #
4331.01

Signature
12/22/25
Laboratory License #:
405R-00037